

YEAR 2014

CORE STATION 1028

ROAD NETWORK MAJOR

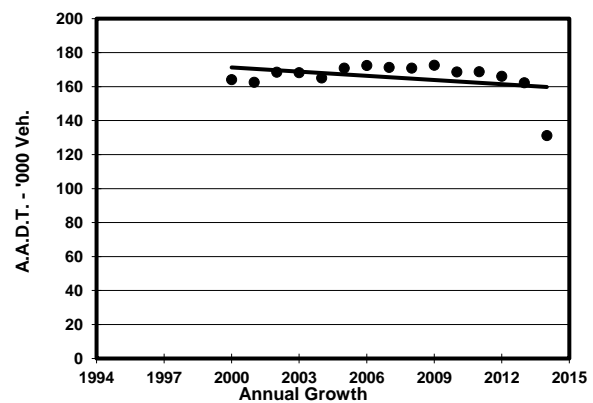
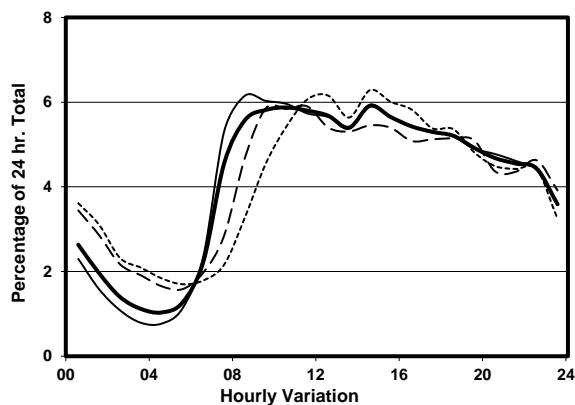
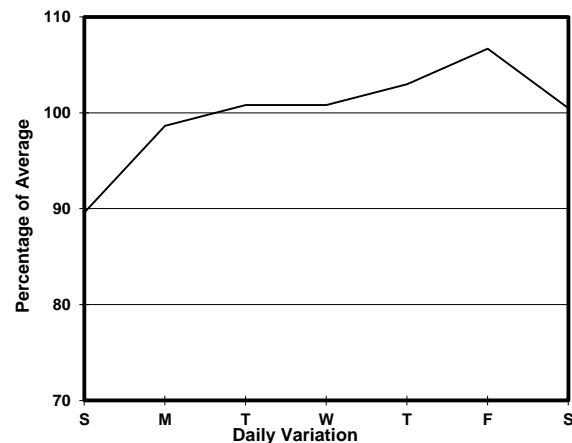
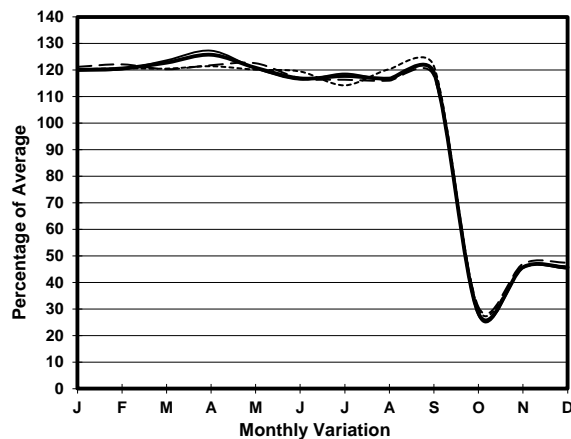
ROAD TYPE URBAN TRUNK ROAD

LINK GLOUCESTER RD (from ARSENAL ST to CROSS HARBOUR TUNNEL S. INT)

6.5m 15.8m 2.8m 19m 5.3m

E bound 5 lanes W bound 5 lanes

## 1. TRAFFIC FLOW VARIATION AND GROWTH



— All day — Mon.- Fri. - - - - Sat. - - - - Sun.

## 2. TRAFFIC CHARACTERISTICS (BY DIRECTION)

Parameter	All - Day	Mon. - Fri.	Sat.	Sun.
<b>EAST BOUND</b>				
A.A.D.T.	66280	67870	65900	61210
R 12 / 24 - %	64.8	66.6	60.1	60.3
R 16 / 24 - %	84.4	86.4	79	79.3
AM Peak Hour	0900-1000	0900-1000	0900-1000	0900-1000
One-way flow at AM peak hour	3730	4000	3680	2540
T - % (AM)	-	-	-	-
PM Peak Hour	1600-1700	1600-1700	1800-1900	1600-1700
One-way flow at PM peak hour	3580	3650	3330	3690
T - % (PM)	-	-	-	-
Prop.of commercial vehicles - 16 hr.	-	-	-	-
<b>WEST BOUND</b>				
A.A.D.T.	64880	66750	65260	57560
R 12 / 24 - %	67.6	68.9	64	64.1
R 16 / 24 - %	85.1	86.4	82	81.4
AM Peak Hour	0800-0900	0800-0900	0900-1000	0900-1000
One-way flow at AM peak hour	3900	4430	4000	2870
T - % (AM)	-	-	-	-
PM Peak Hour	1600-1700	1600-1700	1600-1700	1700-1800
One-way flow at PM peak hour	3540	3650	3440	3310
T - % (PM)	-	-	-	-
Prop.of commercial vehicles - 16 hr.	-	-	-	-

## 3. OTHER INFORMATION AND COMMENT

Traffic was diverted due to closure of some main roads in urban area from 28 September to 15 December 2014.